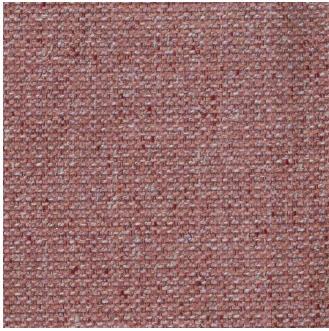
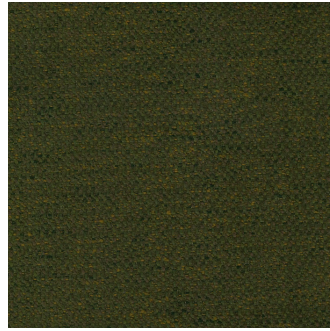


AKITO

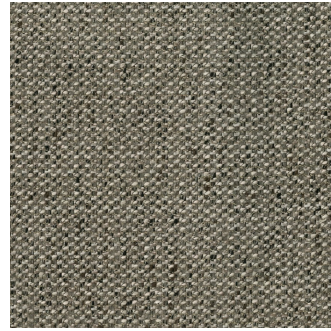




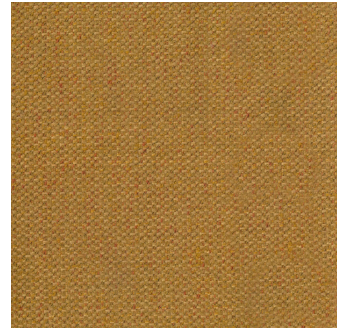
Blush



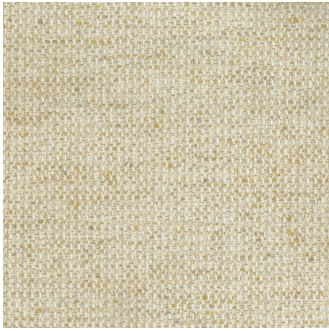
Forest



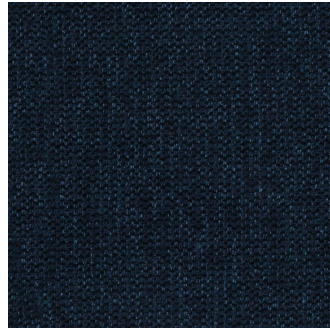
Fossil



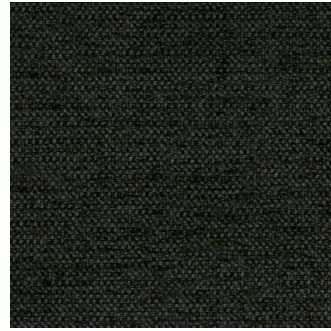
Marigold



Natural



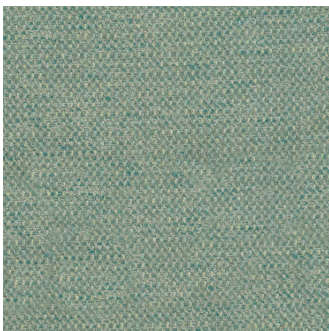
Ocean



Onyx



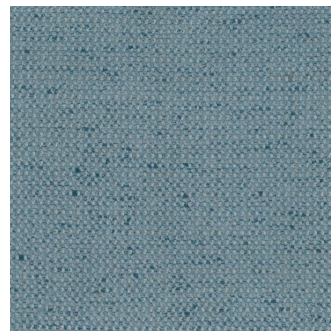
Sand



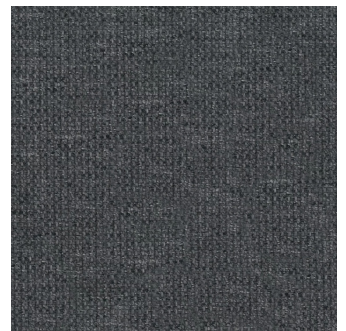
Seafoam



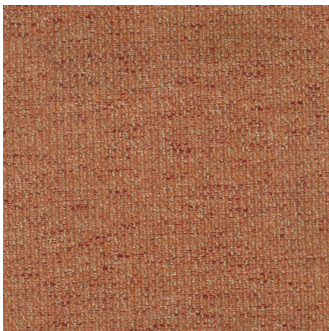
Silver



Sky



Steel



Terracotta



Walnut

# WARWICK

## Akito

Colour(s)	Blush, Forest, Fossil, Marigold, Natural, Ocean, Onyx, Sand, Seafoam, Silver, Sky, Steel, Terracotta, Walnut
Product Type(s)	Upholstery (Heavy Commercial)
Attributes	Halo Easy Care, Oekotex Standard 100
Styles	Plain, Texture
Composition	60% Polyester 40% Olefin
Pattern Match	No
Pattern Repeat (cm)	Plain

## Test Results

Martindale (ISO 12947, 12kPA)	80,000 Cycles
Seam Slippage (mm) (ISO 13936-2, Load 180)	Warp 1.5, Weft 0.0
Pilling Resistance (ISO 12945-2)	5
Colourfastness to Light Xenon arc (ISO 105-B02, blue std 6)	5/6
Colourfastness to Rubbing (ISO 105-X12)	Dry 4/5, Wet 4
Free and Hydrolysed Formaldehyde (ISO 14184-1:1998)	Not Detectable
Flammability AS/NZS 1530.3 - 1999	
Ignitability (0-20)	14
Spread of Flame (0-10)	0
Heat Involved (0-10)	2
Smoke Developed (0-10)	4
Oekotex Standard 100	BD015 173825 TESTEX
Quality Management System ISO9001	Yes

## Specifications

Usage	Heavy Commercial Wyzenbeek 100,000
Composition	100% Polyester
Pattern Repeat	Plain

## Test Results

Wyzenbeek (ASTM D3597, mesh, 4lb/3lb)	100,000 Cycles
Seam Slippage (mm) (ISO 13936-2, Load 180)	Warp 3.1, Weft 3.6
Pilling Resistance (ISO 12945-2)	5
Colourfastness to Light Xenon arc (ISO 105-B02, blue std 6)	5
Colourfastness to Rubbing (ISO 105-X12)	Dry 5, Wet 4/5
Free and Hydrolysed Formaldehyde (ISO 14184-1:1998)	Not Detectable
Flammability AS/NZS 1530.3 - 1999	
Ignitability (0-20)	12
Spread of Flame (0-10)	0
Heat Involved (0-10)	2
Smoke Developed (0-10)	4
Oekotex Standard 100	SH015 133029 TESTEX