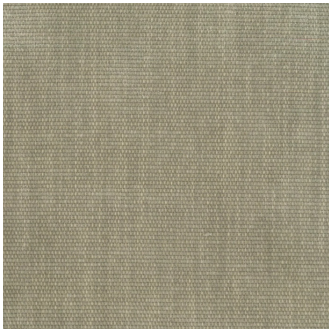


COPELAND

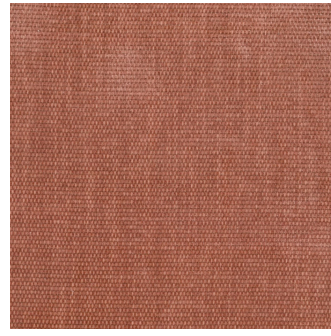




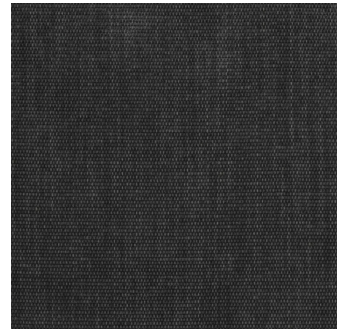
**Bark**



**Birch**



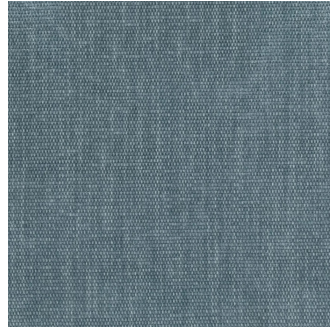
**Brick**



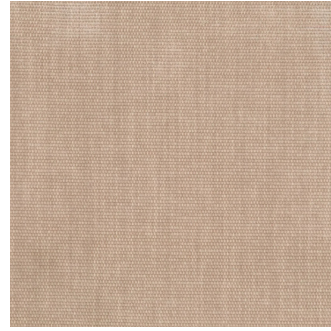
**Charcoal**



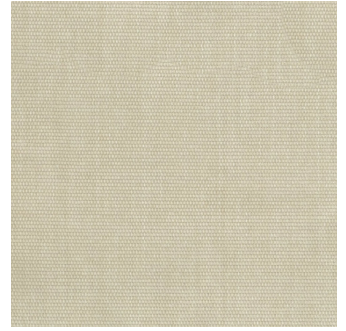
**Cloud**



**Denim**



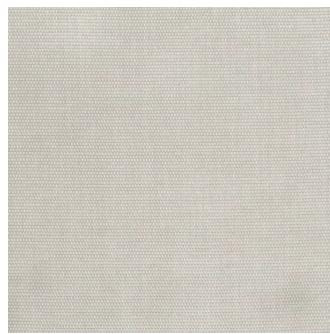
**Dusk**



**Ecru**



**Eucalyptus**



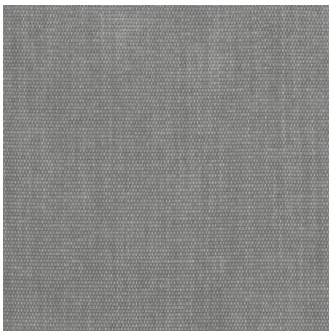
**Frost**



**Granite**



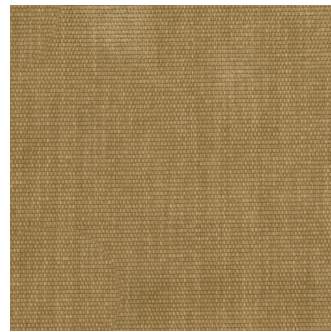
**Greenstone**



**Gull**



**Hazel**



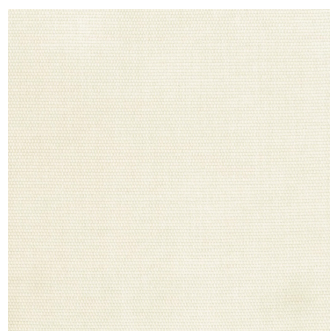
**Honey**



**Hunter**



**Ink**



**Ivory**



**Lagoon**



**Mallard**





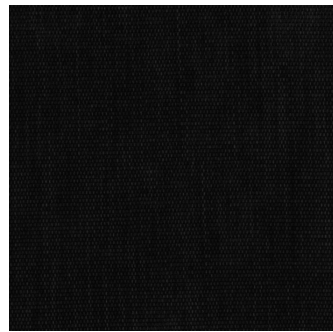
Marl



Mist



Olive



Onyx



Opal



Praline



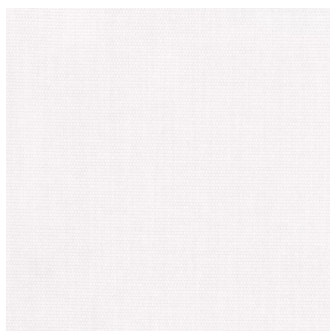
Pumice



Raisin



Rosebud



Snow



Spruce



Sumac

# WARWICK

## Copeland

Collection(s)	Gladiator 4 Book, Copeland, Koppal
Colour(s)	Bark, Birch, Brick, Charcoal, Cloud, Denim, Dusk, Ecru, Eucalyptus, Frost, Granite, Greenstone, Gull, Hazel, Honey, Hunter, Ink, Ivory, Lagoon, Mallard, Marl, Mist, Olive, Onyx, Opal, Praline, Pumice, Raisin, Rosebud, Snow, Spruce, Sumac
Product Type(s)	Upholstery (Heavy Commercial)
Attributes	Halo Easy Care, Washable, Oekotex Standard 100
Styles	Plain, Texture, Modern, Industrial
Composition	100% Polyester
Pattern Match	No
Pattern Repeat (cm)	Plain

## Test Results

Wyzenbeek (ASTM D3597, mesh, 4lb/3lb)	100,000 Cycles
Seam Slippage (mm) (ISO 13936-2, Load 180)	Warp 3.1, Weft 3.6
Pilling Resistance (ISO 12945-2)	5
Colourfastness to Light Xenon arc (ISO 105-B02, blue std 6)	5
Colourfastness to Rubbing (ISO 105-X12)	Dry 5, Wet 4/5
Free and Hydrolysed Formaldehyde (ISO 14184-1:1998)	Not Detectable
Flammability AS/NZS 1530.3 - 1999	
Ignitability (0-20)	12
Spread of Flame (0-10)	0
Heat Involved (0-10)	2
Smoke Developed (0-10)	4
Oekotex Standard 100	SH015 133029 TESTEX