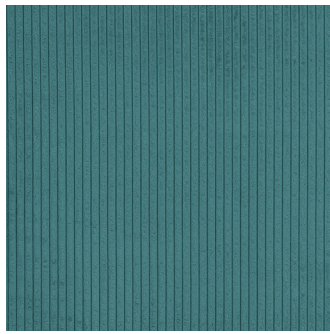


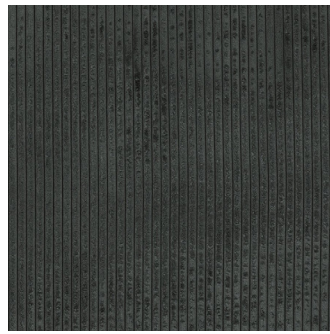
JUMBO



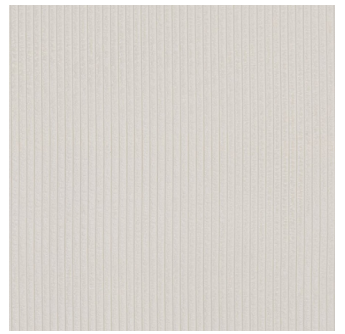
Alpine



Capri



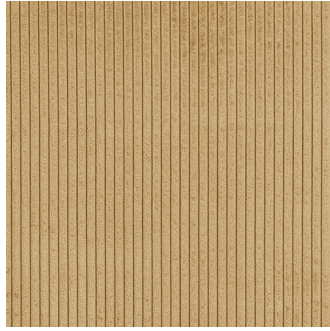
Charcoal



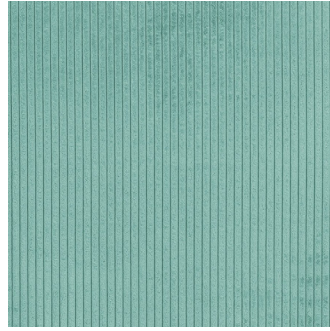
Cloud



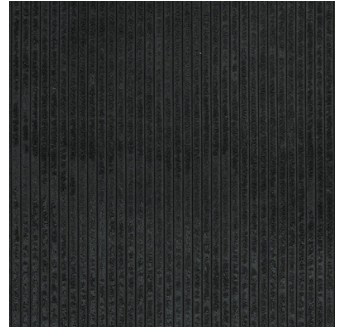
Doeskin



Gold



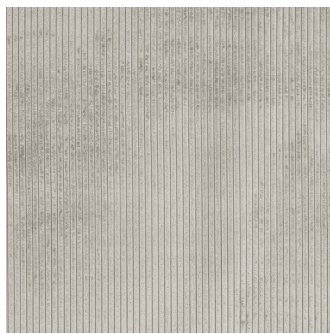
Jade



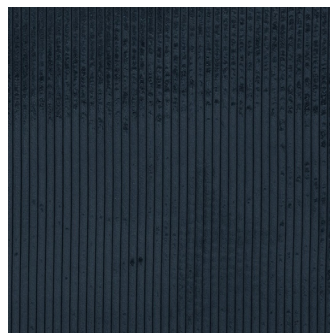
Jet



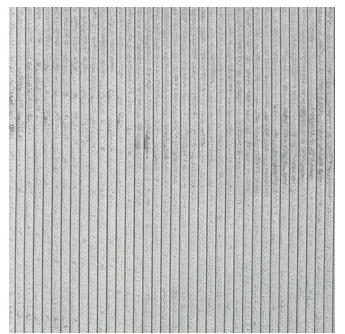
Mink



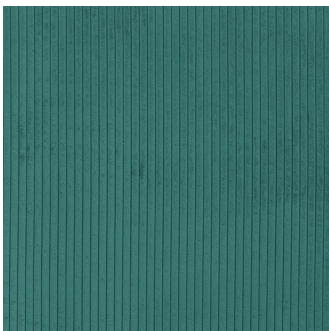
Natural



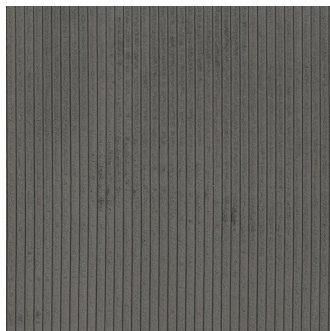
Navy



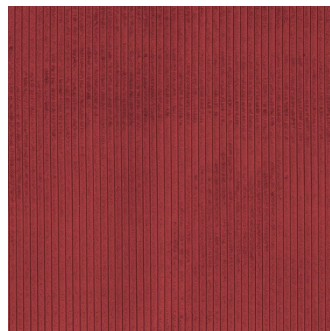
Nickel



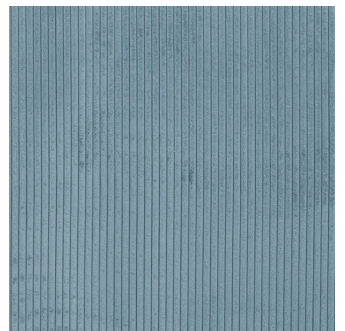
Peacock



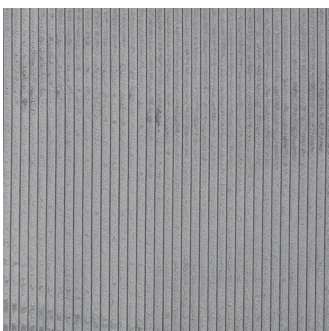
Pewter



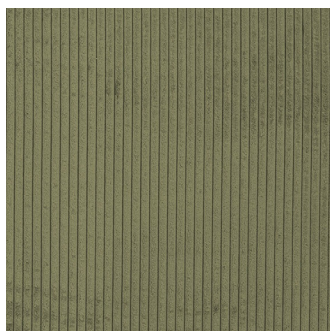
Salsa



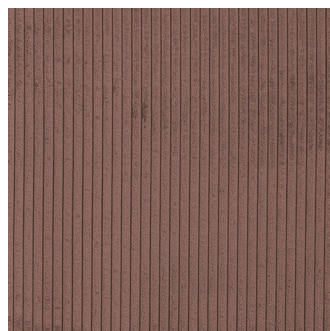
Sky



Steel



Willow



Woodrose

JUMBO

Specifications

Usage	Heavy Commercial
Composition	88% Polyester, 12% Nylon
Pattern Repeat	V: Stripe x H: 1cm

Test Results

Abrasion resistance - Martindale (ISO 12947)	100,000 cycles
Seam slippage (ISO 13936-2, Load 180)	Warp: 4.3mm, Weft: 4.1mm
Pilling resistance (ISO 12945-2)	5
Colourfastness to light (ISO 105-B02, blue std 6)	5/6
Colourfastness to rubbing (ISO 105-X12:1993)	Dry: 5, Wet: 4/5
Free and hydrolysed formaldehyde (ISO 14184-1:1998)	Not detectable

Fabric may vary in colour due to the nature of the media

