

ORLEANS



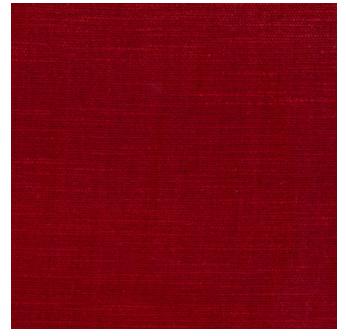
Asphalt



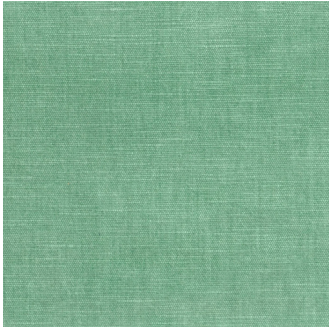
Bone



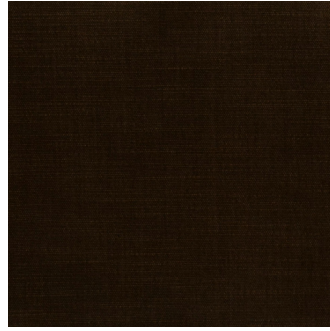
Capri



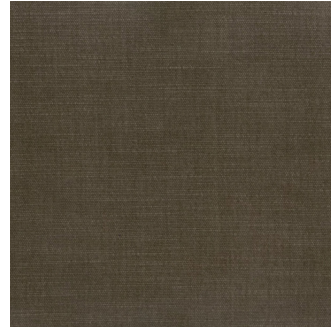
Chili



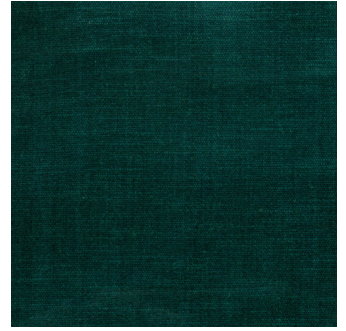
Clover



Cocoa



Driftwood



Evergreen



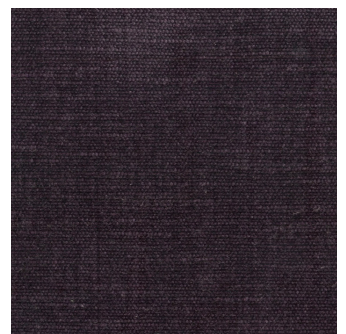
Fawn



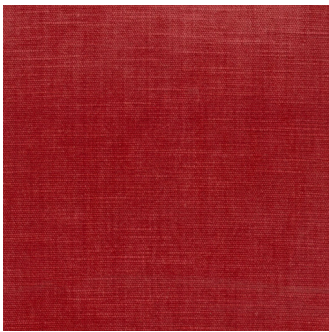
Fog



Ginger



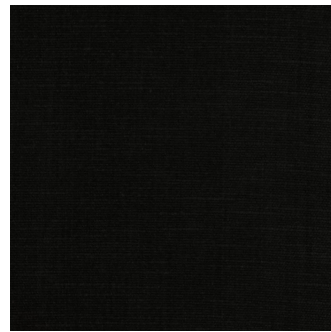
Grape



Hibiscus



Honey



Jet



Lavender



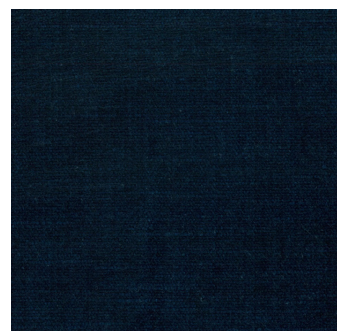
Lichen



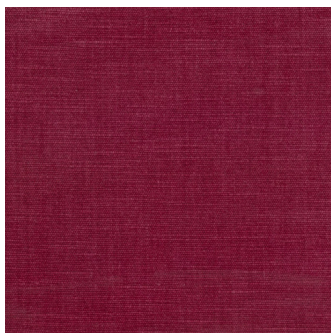
Marine



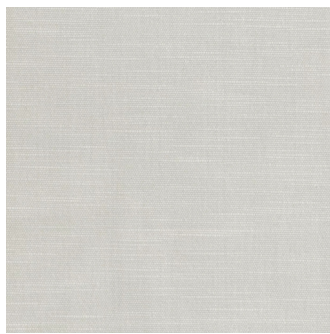
Moss



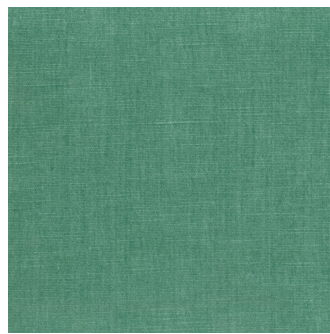
Navy



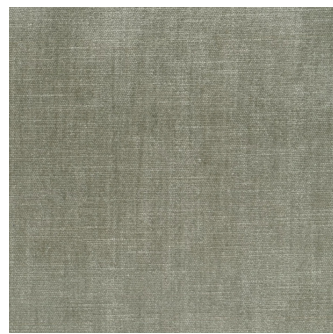
Orchid



Oyster



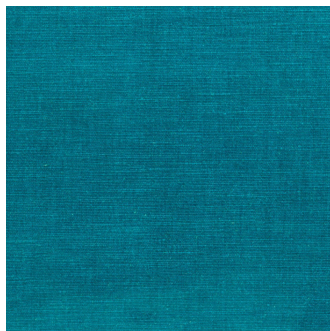
Pine



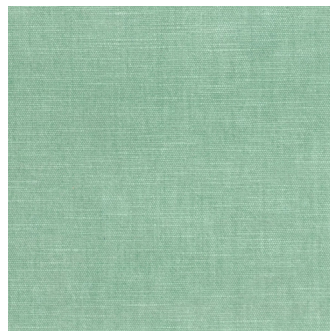
Pumice



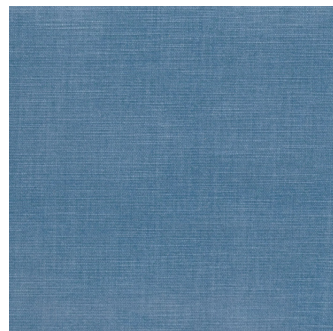
Rhubarb



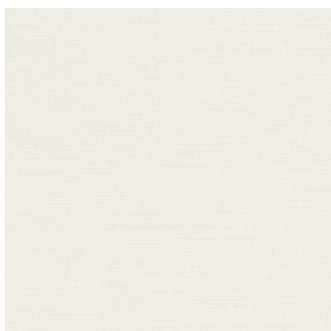
Scuba



Seafoam



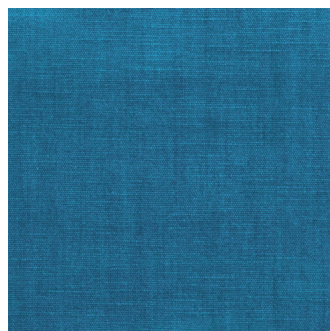
Sky



Snow



Storm



Surf



Tapioca



Walnut

WARWICK

Orleans

Collection(s)	Orleans
Colour(s)	Asphalt, Bone, Capri, Chili, Clover, Cocoa, Driftwood, Evergreen, Fawn, Fog, Ginger, Grape, Hibiscus, Honey, Jet, Lavender, Lichen, Marine, Moss, Navy, Orchid, Oyster, Pine, Pumice, Rhubarb, Scuba, Seafoam, Sky, Snow, Storm, Surf, Tapioca, Walnut
Product Type(s)	Drapery Upholstery (Heavy Commercial)
Attributes	Washable, Oekotex Standard 100
Styles	Plain, Texture, Modern
Composition	64% Polyester 36% Cotton
Pattern Match	No
Pattern Repeat (cm)	Plain

Test Results

Wyzenbeek (ASTM D3597, mesh, 4lb/3lb)	100,000 Cycles
Seam Slippage (mm) (ISO 13936-2, Load 180)	Warp 2.9, Weft 2.6
Pilling Resistance (ISO 12945-2)	5
Colourfastness to Light Xenon arc (ISO 105-B02, blue std 6)	>6
Colourfastness to Rubbing (ISO 105-X12)	Dry 4/5, Wet 4
Dimension Change - Laundering (%) (ISO 5077/ISO 6330.7BA)	Warp -3.0, Weft -4.3
Dimension Change - Hanging (%) (AS2663.1.B)	Warp 0.0, Weft 0.0
Free and Hydrolysed Formaldehyde (ISO 14184-1:1998)	Not Detectable
Flammability AS/NZS 1530.2 - 1993 Flammability Index (0-100) Spread Factor (0-40) Heat Factor (0 upward)	- Length -, Width - Length -, Width -
Flammability AS/NZS 1530.3 - 1999 Ignitability (0-20) Spread of Flame (0-10) Heat Involved (0-10) Smoke Developed (0-10)	- - - -
Oekotex Standard 100	11-49293 SHIRLEY