

OVIS



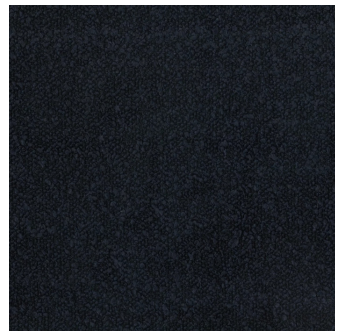
Cocoa



Ecru



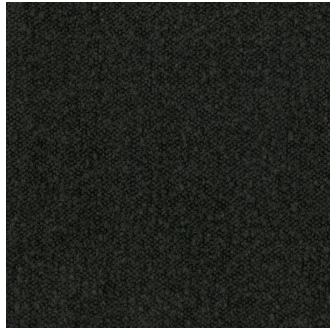
Ivory



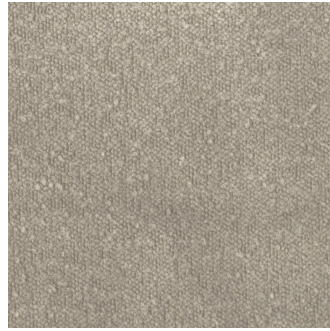
Midnight



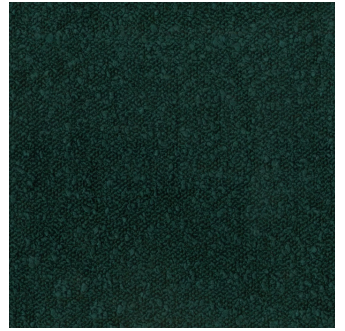
Nougat



Onyx



Pumice



Spruce



Steel



Umber

# WARWICK

## Ovis

|                     |   |
|---------------------|---|
| Collection(s)       | Ovis  |
| Colour(s)           | Cocoa, Ecu, Ivory, Midnight, Nougat, Onyx, Pumice, Spruce, Steel, Umber |
| Product Type(s)     | Upholstery (Heavy Commercial)   |
| Styles              | Plain, Texture, Contemporary, Urban, Modern                             |
| Composition         | 80% Polyester 10% Acrylic 10% Cotton                                    |
| Pattern Match       | No  |
| Pattern Repeat (cm) | Plain   |

## Test Results

|  |                    |
|--|--------------------|
| Martindale<br>(ISO 12947, 12kPA)                               | 87,500 Cycles      |
| Seam Slippage (mm)<br>(ISO 13936-2, Load 180)                  | Warp 4.3, Weft 5.8 |
| Pilling Resistance<br>(ISO 12945-2)                            | 5                  |
| Colourfastness to Light<br>Xenon arc (ISO 105-B02, blue std 6) | >6                 |
| Colourfastness to Rubbing<br>(ISO 105-X12)                     | Dry 5, Wet 5       |
| Free and Hydrolysed Formaldehyde<br>(ISO 14184-1:1998)         | Not Detectable     |
| Flammability AS/NZS 1530.3 - 1999                              |                    |
| Ignitability (0-20)  | 12                 |
| Spread of Flame (0-10)   | 8                  |
| Heat Involved (0-10)   | 5                  |
| Smoke Developed (0-10)   | 5                  |