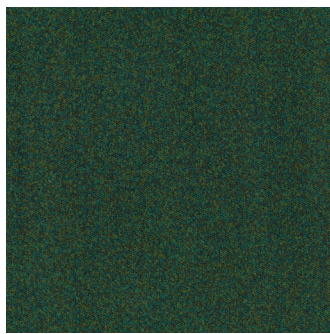


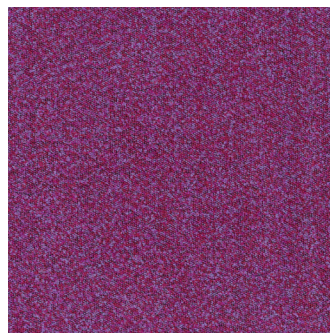
BUCKLEY



Bark



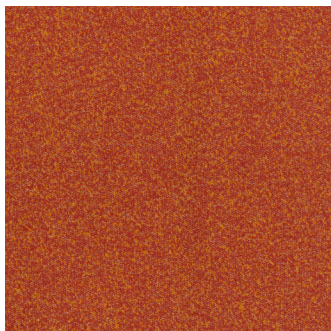
Basil



Berry



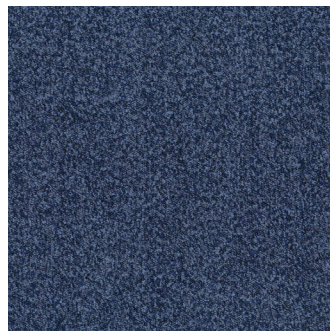
Carbon



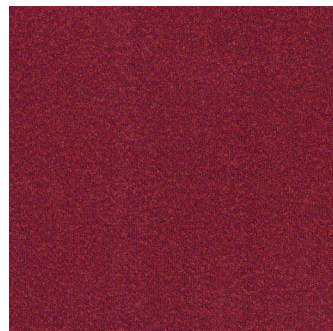
Chili



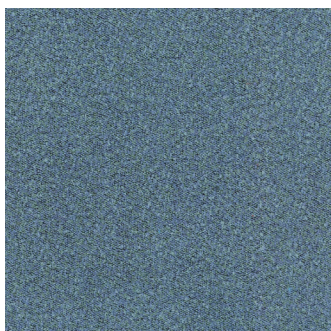
Chocolate



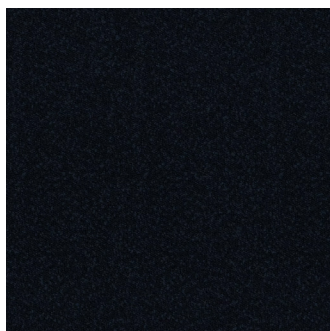
Denim



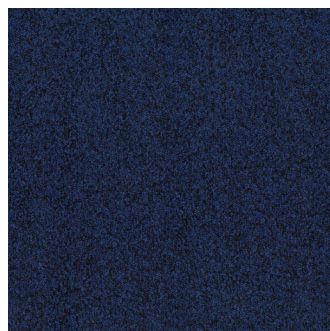
Fuchsia



Marine



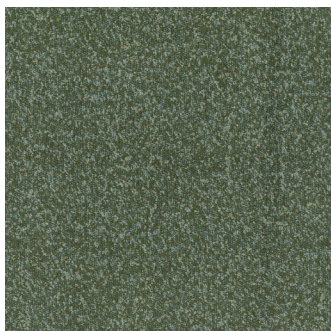
Midnight



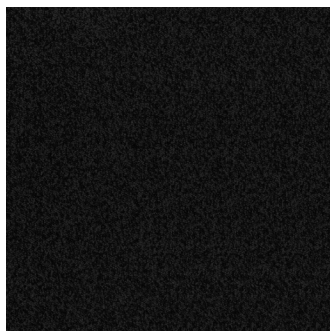
Navy



Nomad



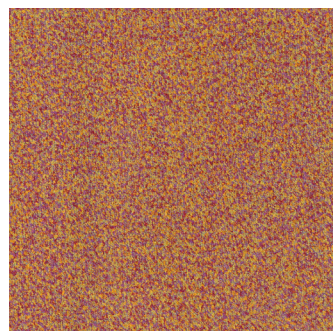
Olive



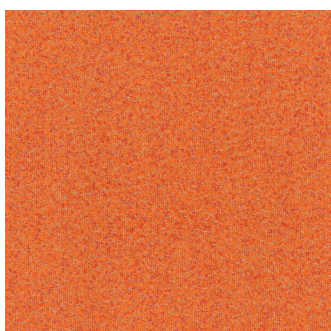
Onyx



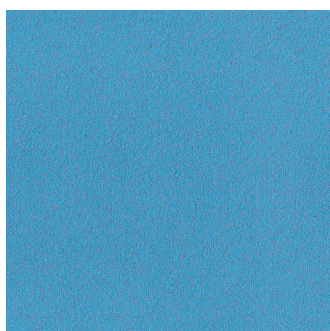
Parchment



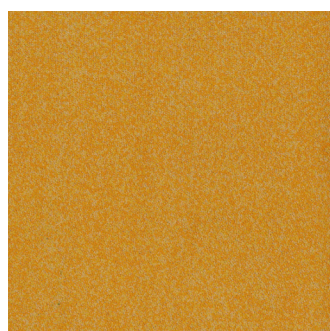
Punch



Sherbet



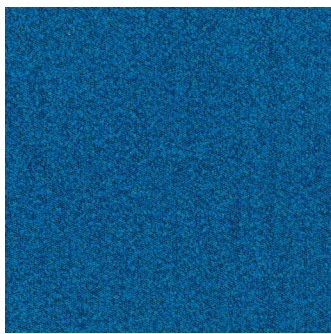
Sky



Sunrise



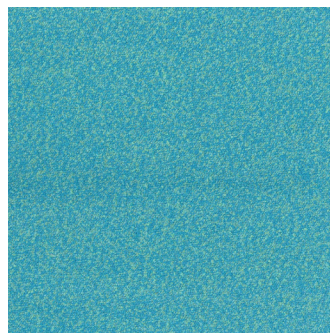
Tan



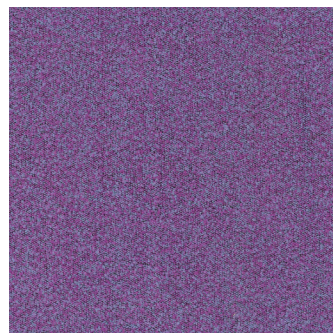
Teal



Toffee



Turquoise






Violet



Zinc

WARWICK

Buckley

Collection(s)	Buckley
Colour(s)	Bark, Basil, Berry, Carbon, Chili, Chocolate, Denim, Fuchsia, Marine, Midnight, Navy, Nomad, Olive, Onyx, Parchment, Punch, Sherbet, Sky, Sunrise, Tan, Teal, Toffee, Turquoise, Violet, Zinc
Product Type(s)	Upholstery (Heavy Commercial)
Attributes	Halo Easy Care, Oekotex Standard 100
Styles	Plain, Texture, Contemporary, Modern
Composition	100% Polyester
Pattern Match	No
Pattern Repeat (cm)	Plain
Railroaded	Plain Fabrics marked Railroaded 'Plain' can be cut in either direction at the discretion of the manufacturer, and in consultation with the customer's preference. Fabric is sampled in the direction it comes up the roll (Non Railroaded).
Width (cm)	142
Roll Size (approx)	40m
Weight (gsm)	350
Origin	Non European
Stain Repellent	No
FIAA Care Label	FIAA Care Label 3 - Non Pile Fabrics
Usage	 Upholstery  Cushion  Lamp Shade
Guarantee	3 Years in accordance with our product type and care instructions

Test Results

Martindale (ISO 12947, 12kPA)	50,000 Cycles
Seam Slippage (mm) (ISO 13936-2, Load 180)	Warp 5.5, Weft 5
Pilling Resistance (ISO 12945-2)	3/4
Colourfastness to Light Xenon arc (ISO 105-B02, blue std 6)	6
Colourfastness to Rubbing (ISO 105-X12)	Dry 4/5, Wet 4/5
Free and Hydrolysed Formaldehyde (ISO 14184-1:1998)	Not Detectable
Flammability AS/NZS 1530.3 - 1999	
Ignitability (0-20)	12
Spread of Flame (0-10)	0
Heat Involved (0-10)	1
Smoke Developed (0-10)	5
Oekotex Standard 100	SH015 169368 TESTEX